

## HC-B 24-SFQD-67/M1PG21

Order No.: 1772010

<http://eshop.phoenixcontact.de/phoenix/treeViewClick.do?UID=1772010>

Box mounting base, for double locking latch, height 67 mm, with screw connection, 1x Pg21, with protective covers

### Commercial data

EAN	4017918036683
Pack	10 Pcs.
Customs tariff	76169910
Weight/Piece	0.48053 KG
Catalog page information	Page 415 (PC-2007)

### Product notes

WEEE/RoHS-compliant since:  
03/03/2006



<http://www.download.phoenixcontact.com>  
Please note that the data given here has been taken from the online catalog. For comprehensive information and data, please refer to the user documentation. The General Terms and Conditions of Use apply to Internet downloads.

### Technical data

#### General data

Note	For contact inserts HC-B24, BB46, D64, DD108, M
Design	B24
Height	67 mm
Width	57 mm

Length	144 mm
Housing type	Box mounting base with cover
Locking type	For double locking latch
Type of the screw connection	1x Pg21
Pg screw connection	With
Wrench size, union nut	28 mm
External cable diameter	10 mm ... 19 mm
Protective cover	Yes
Degree of protection	IP65
Ambient temperature (operation)	-40 °C ... 125 °C
Housing material	Aluminum, die-cast
Housing surface material	Powder-coated, gray
Seal material	NBR
Screw connection material	Nickel-plated brass
Cable seal material	NBR
Material, protective cover	PA

### Certificates / Approvals

#### Approval logo

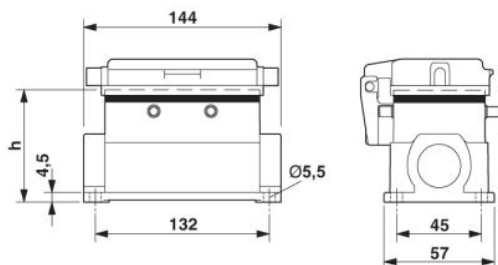


#### requested approbations

Certification	GOST
---------------	------

### Drawings

#### Dimensioned drawing



**Address**

PHOENIX CONTACT GmbH & Co. KG  
Flachsmarktstr. 8  
32825 Blomberg, Germany  
Phone +49 5235 3 00  
Fax +49 5235 3 41200  
<http://www.phoenixcontact.com>



© 2008 Phoenix Contact  
Technical modifications reserved;